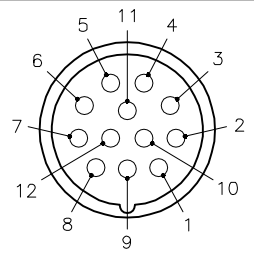
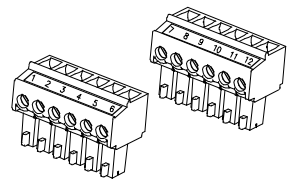


FEMALE END VIEW (J1)

TERMINAL BLOCK PLUGS

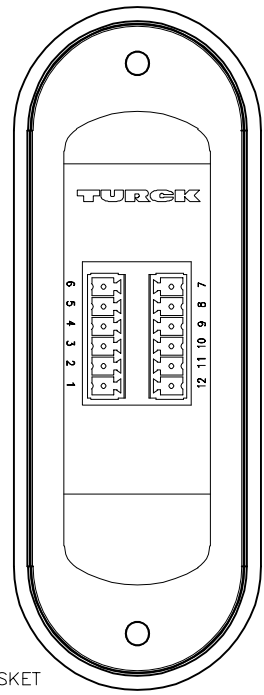
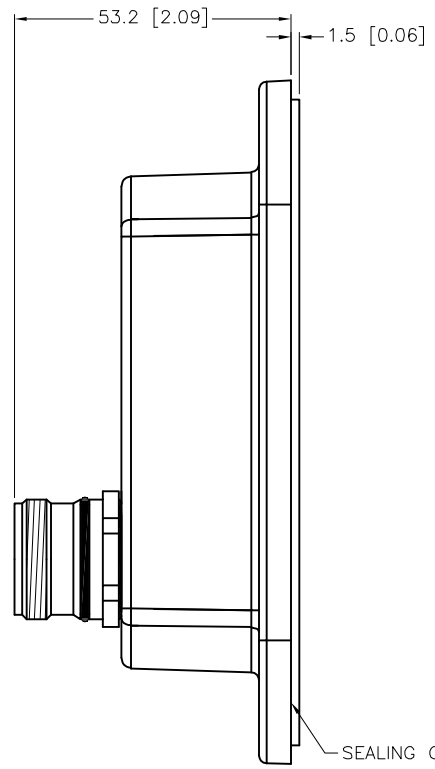
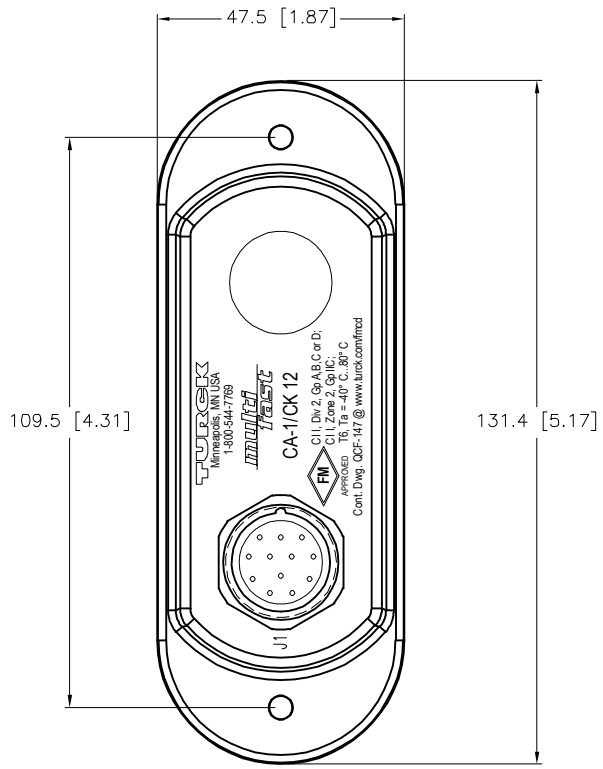


M23 connector

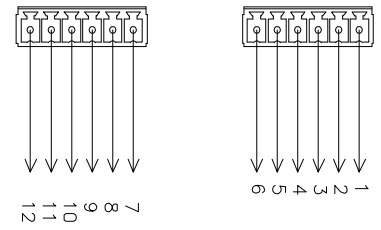


SPECIFICATIONS

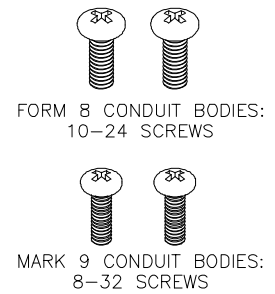
HOUSING MATERIAL/COLOR	NYLON 66 - 33% GLASS FILLED/BLACK
CONTACT CARRIER/COLOR	PBT OR NYLON/WHITE
CONTACT MATERIAL/PLATING	BRASS/GOLD
RECEPTACLE HOUSING MATERIAL/PLATING	BRASS/NICKEL
OPERATING CURRENT [A]	4.0 A
OPERATING VOLTAGE [V]	300 V
PROTECTION CLASS to DIN 40050	IP 67 - ONLY WHEN ALL RECEPTACLES ARE COVERED WITH PLUGS OR CONNECTED
OPERATING TEMPERATURE	-30°C to +80°C (-22°F to +176°F)



WIRING DIAGRAM



COVER SCREWS INCLUDED



SOURCE DRAWING - FOR REFERENCE ONLY

RELATED DOCUMENTS 1. 2. 3. 4.	3RD ANGLE PROJECTION 	THIS DRAWING IS CONFIDENTIAL AND THE PROPERTY OF TURCK INC. USE OF THIS DOCUMENT WITHOUT WRITTEN PERMISSION IS PROHIBITED.		3000 CAMPUS DRIVE MINNEAPOLIS, MN 55441 1-800-544-7769 (763) 553-7300 (763) 553-0708 fax www.turck.us		
	MATERIAL	DRFT RWC APVD	DATE 11/18/05 SCALE 1=1.5	DESCRIPTION CA-1/CK 12		
	FINISH	ALL DIMENSIONS DISPLAYED ON THIS DRAWING ARE FOR REFERENCE ONLY  CONTACT TURCK FOR MORE INFORMATION	UNIT OF MEASUREMENT <b>MILLIMETER [ INCH ]</b>		IDENTIFICATION NO. U2-06369	REV F
	F		UPDATE CLICHE NF 10/21/25 81452	DO NOT SCALE THIS DRAWING		FILE: U2-06369
REV	DESCRIPTION	BY	DATE	ECO NO.		